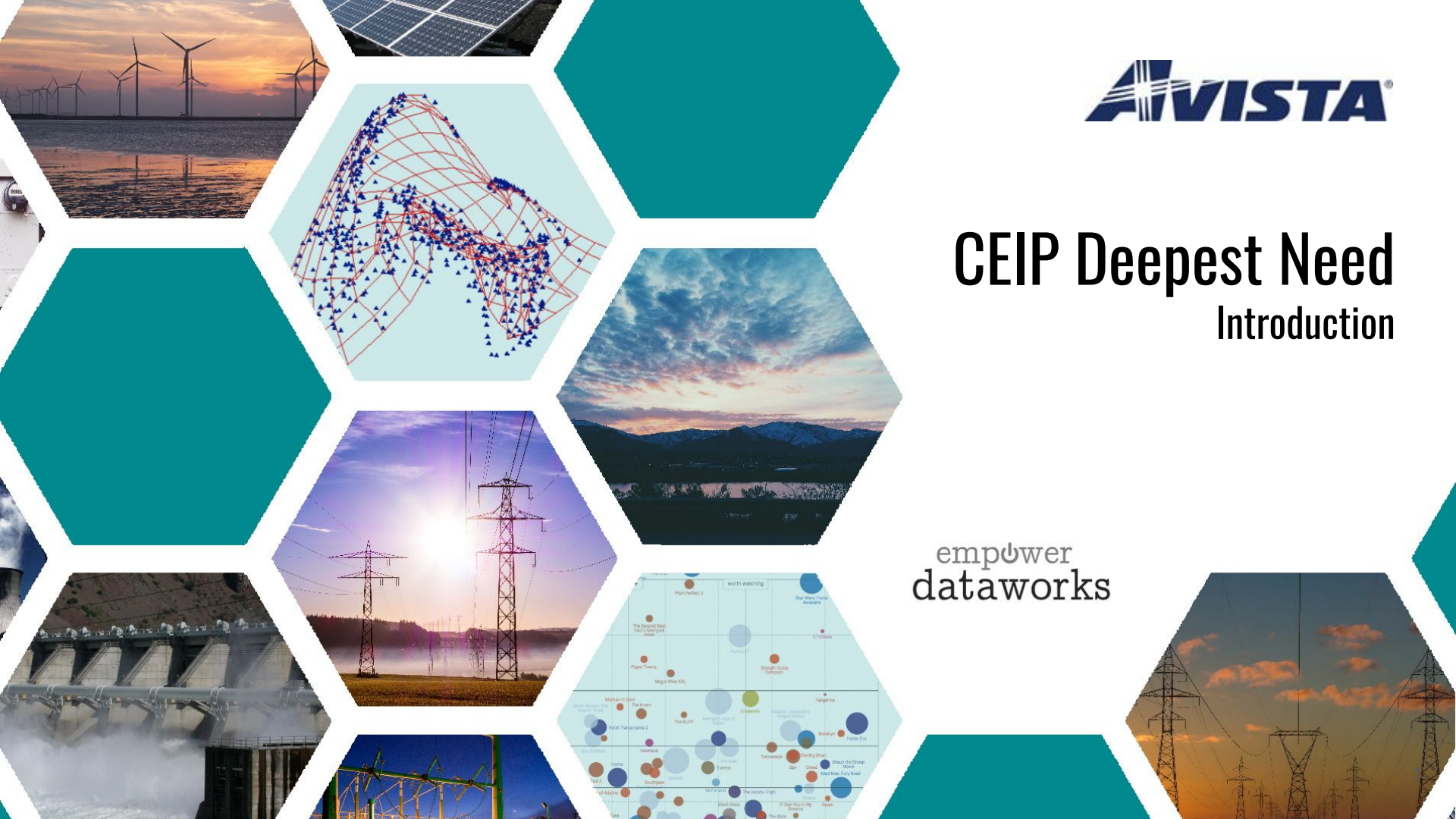




CEIP Deepest Need

Introduction

empower
dataworks



High-level Goals

- 2025 CEIP identified that 58% of Avista's service territory is classified as a Named Community ("NC").
- UTC is recommending a "minimum designation of energy benefits" for a subset of customers living in NCs. We will call this subset Deepest Need Customers ("DNCs").
- Avista is required to:
 - (i) develop a methodology to identify DNCs
 - (ii) set a minimum designation of benefits based on their proportion of the population
 - (iii) design specific actions to support that designation - not limited to EE/DR/Renewables

What is the UTC's perspective?

- Specific actions designed for Named Communities may be “diluted”
- A “minimum designation of benefits” can ensure that the customers most in need, receive help in proportion to their population

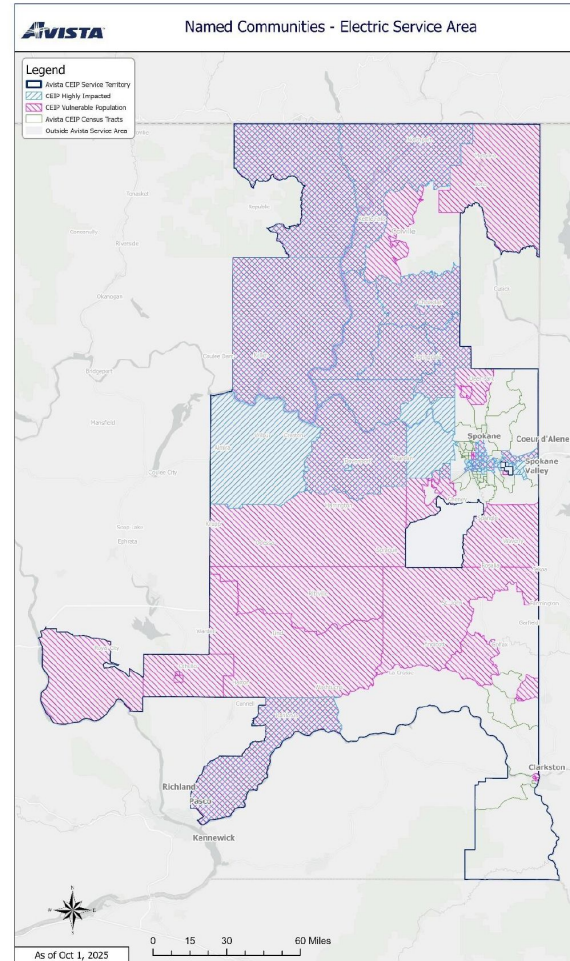
What is need?

Figure No. 4.1: 2025 Vulnerable Population Characteristics

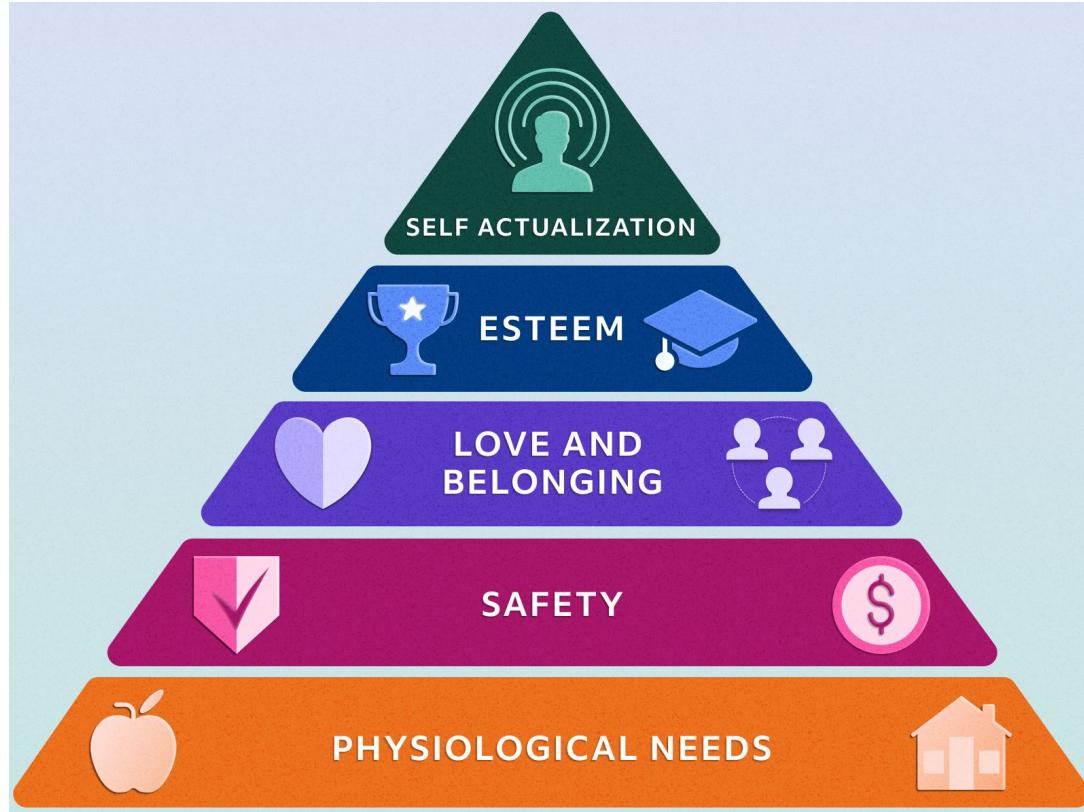
Do these factors imply need?

WA DOH – Socioeconomic & Sensitive Factors	Equity Advisory Group Identified Characteristics	
<ul style="list-style-type: none"> ▪ No high school diploma ▪ People of color ▪ Population living in poverty <=185% of the Federal Poverty Level ▪ Primary language other than English ▪ Unemployment ▪ Death from cardiovascular disease ▪ Low birth weight ▪ Unaffordable house >30% of income ▪ Transportation expense 	<ul style="list-style-type: none"> ▪ American Indian and Alaska Native (on/off reservation) ▪ BIPOC ▪ Eastside of Spokane ▪ Fossil fuel industry workers ▪ Houseless populations ▪ Individuals who do not read ▪ LBGTQIA2S+ ▪ Low-Income ▪ Migrant workers ▪ Monolingual (no written languages) ▪ Northeast Spokane households ▪ Aging populations ▪ Resiliency (community & personal) ▪ Takesa Village, Mead, WA ▪ Religious and spiritual people ▪ Rural ▪ High energy burden 	
<p>Federal Justice 40 Factors</p> <ul style="list-style-type: none"> ▪ Climate Change ▪ Legacy Pollution ▪ Energy Factors ▪ Transportation ▪ Health ▪ Water and Wastewater ▪ Housing ▪ Workforce Development 	<ul style="list-style-type: none"> ▪ Neighboring communities and states ▪ Non-English speakers ▪ Homes with older infrastructure ▪ People who fall between the cracks ▪ People with disabilities ▪ Populations outside of Avista’s service territory who are affected by fossil fuel infrastructure and production ▪ North Central neighborhood, Spokane, WA ▪ Peaceful Valley, WA ▪ Youngest generation (high school, college) ▪ Youth (some help families navigate resources) ▪ Tenants (renters) ▪ Undocumented individuals ▪ Specific indigenous languages 	

Does geography imply need?



Is need even one thing?



What is need from your perspective?

The Principles

Proposed principles for the Deepest Need methodology:

1. **Addresses the Problem.** Makes it possible to direct program efforts at customers in deepest need. Solves the issue/perception of dilution.
2. **Clear and Logical.** Easy to explain and justify - accepted by stakeholders.
3. **Relevant.** When we say “deepest need”, it must be tied to the energy system - “need” that Avista can have an impact on.
4. **Useful.** The methodology must generate actionable data for the programs that will need to use these definitions
5. **Reproducible.** The methodology and the calculation must be easily replicated by Avista

Option 1: Geography-First Approach

Deepest need is defined as **having compounding socio-economic burdens**.

Methodology: Develop a scoring/weighting system for the Named Community factors.

Outcome: Each census tract gets a Need Score. Highest scores are considered Deepest Need Communities

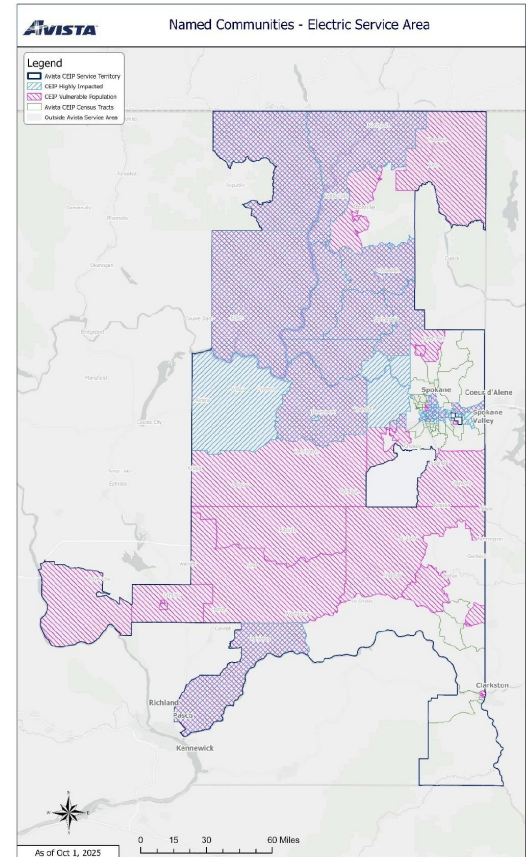
Addresses the Problem

Clear and Logical

Relevant

Useful

Reproducible



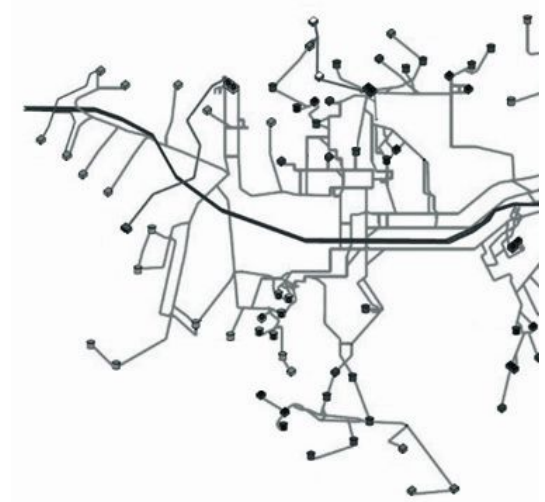
Option 2: Customer-First Approach

Deepest need is defined as **who is struggling with the energy system the most.**

Methodology: Identify customer-level metrics that answer the question: who is struggling with the energy system and who can be impacted the most by our programs.

Deepest Need could be program-specific. Other factors may be taken into account (e.g. medical certificates).

Outcome: Each customer gets a Need Score for LIRAP and energy efficiency. Census tract with lots of Deepest Need customers are considered Deepest Need Communities (for NCIF or other community programs).



Addresses the Problem
Clear and Logical
Relevant
Useful
Reproducible

Option 3: Hybrid Approach

Apply Option 2 but only within previously identified Named Communities.

Addresses the Problem
Clear and Logical
Relevant
Useful
Reproducible

